

# LARGE TYPE CNC TURNING CENTER



MACHTEK  
**LTC-2640**

**LTC 2630 / 2640 / 2660**



**Россия**  
Trade Technology  
Ordzhonikidze ul. d.11, str. 11  
115419, Moscow (Russia)  
Tel. +7 499 - 650 5031  
Fax +7 499 - 650 5031  
Web ► [www.trte.ru](http://www.trte.ru)

## LTC-2630 / 2640 / 2660



High quality fine grained cast iron base which incorporates a 45° slant bed design enhances stability to absorb cutting conditions of heavy workpieces. Guarantees the overall machine vibration dampening and long term accuracy.

Use only high quality cast iron structure and well-ribbed casting, ensuring high torsion stiffness, minimizing vibration and long term accuracy and resulting in superior cutting performance.

**High Rigidity**

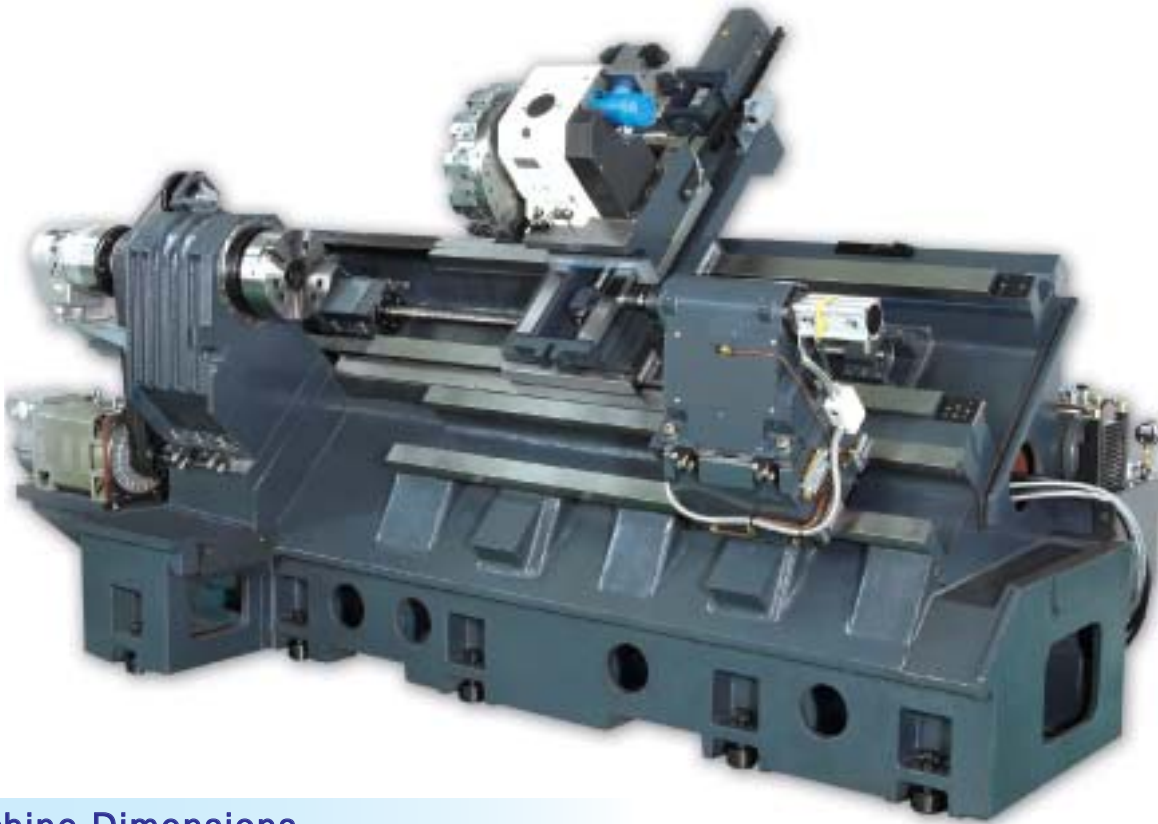
**High Speed**

**High Accuracy**

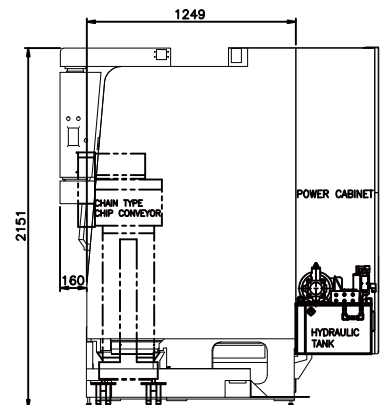
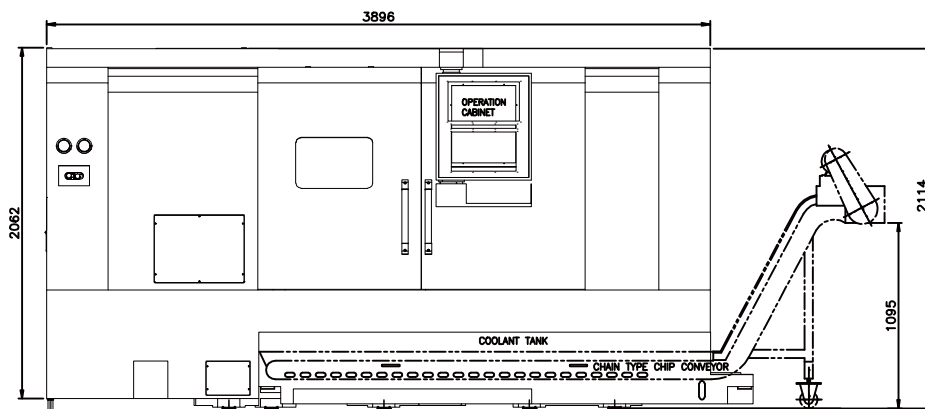
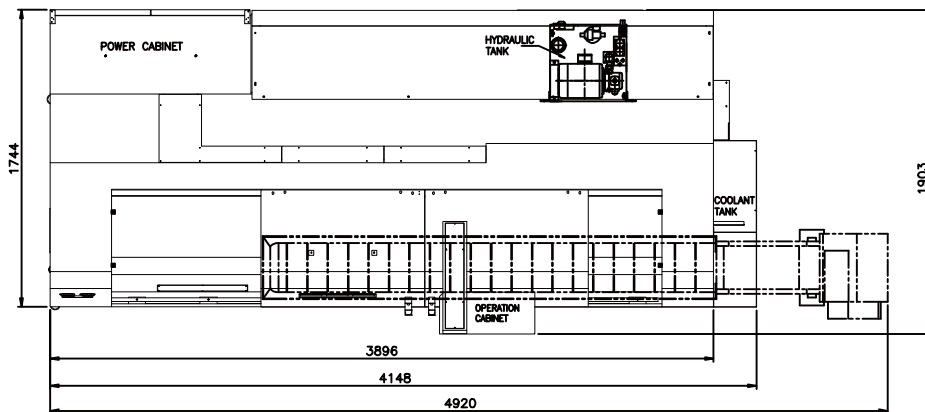


Machine body and all components are made of high class cast iron. Slide ways are hardened and grounded to obtain high accuracy without compromising of machine life. Provides also cost down advantage for the life extension of cutting tools.

## High Rigidity · High Speed · High Accuracy



### Machine Dimensions





## Turret

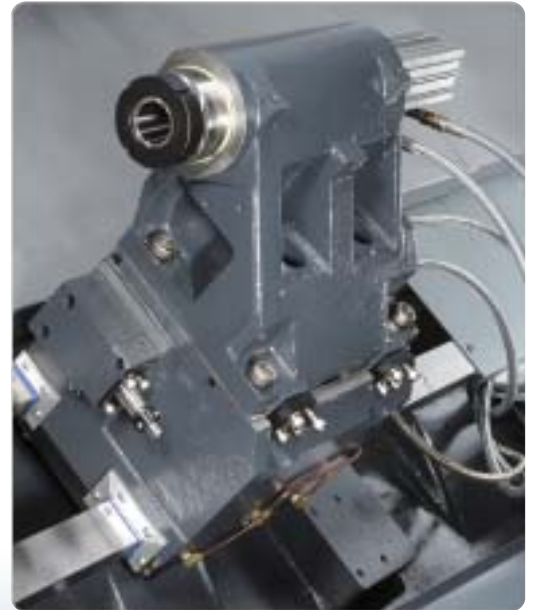
- 12 stations turret is standard equipment.
- Equipped “double-cam-plate” for indexing mechanism, smooth with turbo-speed to turn the tool-disc, with compact design & high durability suitable for heavy cutting of precision.
- Driving source per hydraulic to turn tool-disc, indexing and clamping/unclamping precisely and correctly.

## Tailstock Unit

- The high accuracy tailstock provides high rigidity and high loading durability. The quill movement of the tailstock is programmable. The thrust force is adjusted by the hydraulic pressure.

## Programmable Tailstock

- High rigidity tailstock to eliminate vibration.
- Programmable tailstock for simple operation.
- Fitted with high accuracy tailstock, providing high rigidity and high load capacity, and quill movement of tailstock is controlled programmable. Also, the thrust of tailstock is adjusted by hydraulic pressure to provide the best machining capacity and stability.





## Spindle Unit

- The high precision bearing is adopted for the spindle. The bearings configuration is designed at optimal span to satisfy the stable, heavy cutting as well as long working hours demand.

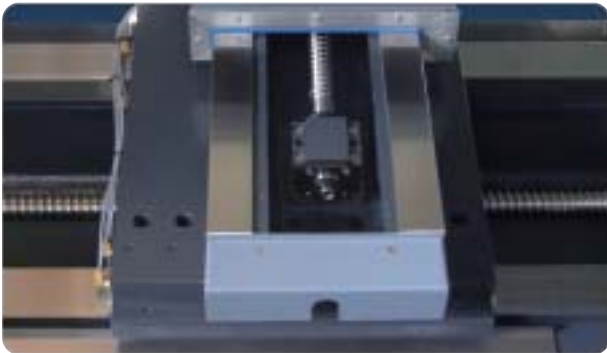


## Hydraulic 3-jaw Chuck

- The 3-jaw hydraulic chuck is standard equipment and comes with hard and soft jaws.



## High Accuracy Transmission Unit



- The servo motors and high precision ballscrews with C3 grade are direct coupled on X/Z axes to assure the high rigidity and high precision.
- The ballscrews have been preloaded to increase its rigidity and to lower the thermal deformation and increase the precision.
- The solid machine with box way achieves the best possible stability for heavy workpieces, and assures the long-term deformation-free.



## Turning Process Applications System

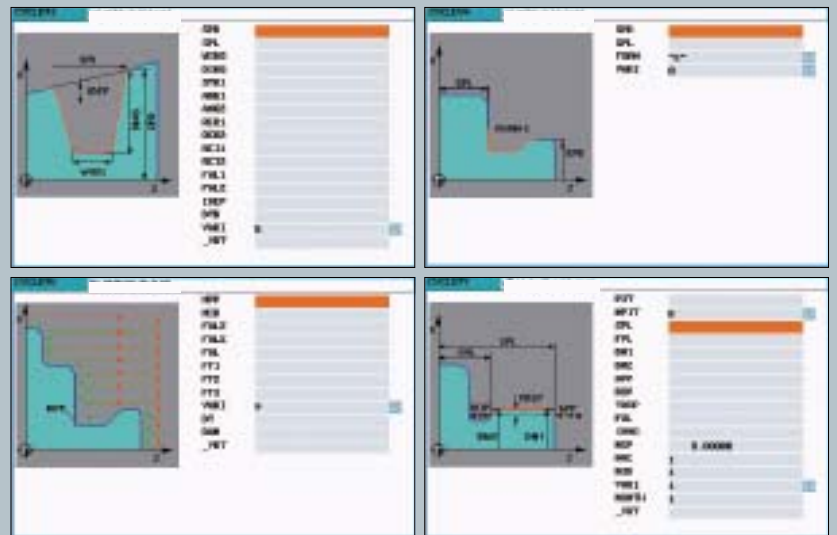


### Rich Dialogue Type Turning and Measurement Cycle

- Provides standard outer diameter turning up to 20 kinds, Dynamic turret with milling, drilling and tapping cycle together with thread turning plus manual and automatic tool measurement function. Contour processing design can complete the curve profile of outer diameter turning programming with ease.



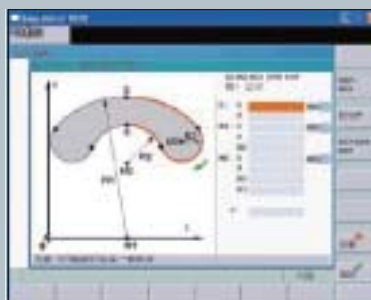
#### ► milling cycle



### Easy Interface and Rich Interactive Processing Cycle

- Built-in interactive processing programming and wide variety of interactive measurement macro work cycle to shorten the learning-time and preparation. Processing program can simulate the real-time preview and processing path to reduce the probability of error occurring.

#### ► Interactive processing programming design



#### ► Interactive tool measurement



## Optional Equipments



### VDI 12 Turret

- The VDI turret employs bidirectional, shortest random access tool selection.
- Fast turret index time is only 0.8 seconds. Powerful cutting and milling capability ensures stable machining.



### Tool Presetter

- The Renishaw HPMA automatic tool setter is one of optional accessories. The tool measure processing is fully automatic. The device is programmable to measure the tool automatically while the preset machining quantity is reached, the detective arm moves downward for the contact and gauge of problem against cutting tool. The non-stop operation of this device tremendously increases the good quality and productivity.



### Electric Cabinet Cooling System

- 4000 BTU capacity provides constant temperature in the electrical cabinet to ensure designed performance at all times even in warm climates.



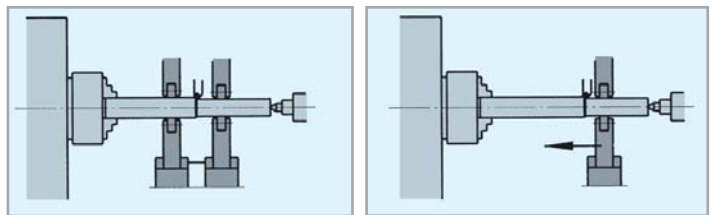




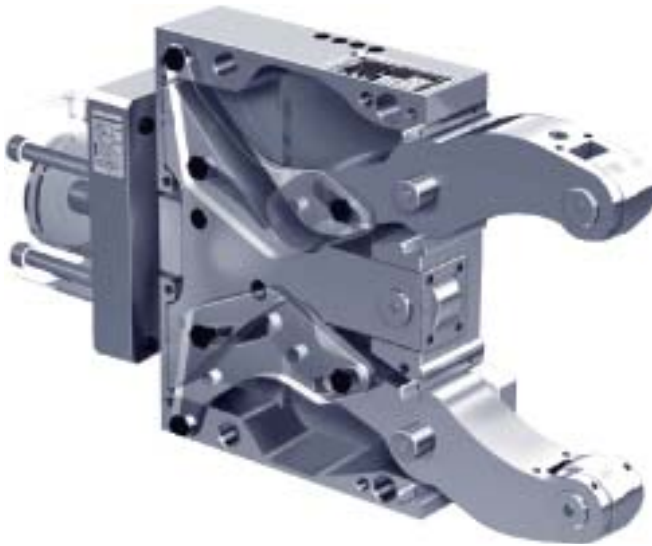
## Self-Centering Steady Rest

- Self-centering steady rest is an essential accessory for turning machine to process longer workpiece. Turning machine collocate with steady rest can increase cutting stability and load capacity. A wide range of clamping diameter can maintain workpiece clamping concentricity and accuracy.

## Application



- ▶ Tandem steady rest **fixed**
- ▶ Steady rest **fixed** for end machining



## Separated Coolant Tank

- The divided coolant tank is designed for easy maintenance. The high pressure pump and the large coolant flow capacity can efficiently remove away the generated heat to assure the accurate machining job.

## High Efficient Chips Removal Device

- The chips conveyor is laid on and under the front side of the machine. This chain type device can easily convey away the large volume of chips generated during the turning process.





## Laser Inspection

- All the machines are manufactured and assembled in accordance with ISO9001 quality management system.
- Every machine has been statically and dynamically inspected and compensated by the laser measuring instrument.
- The 72 hours run-in test is strictly carried out as one of the standard procedure before delivery.



## Ball Screw and Rail Parallelism Inspection

- Parallel installation inspection for X, Z axis ball screw and box way. By maintaining straight line parallel guide way, to ensure the accuracy of machine precision.



## Spindle and Tailstock Concentricity Measurement

- Testing for tailstock and spindle centerline, using the center point to find tailstock and spindle centerline deviation in order to ensure the quality of the workpiece.



## Deviation of Spindle Center & Turret Tool Holder

- Every machine is inspected the deviation of spindle center & turret tool holder after turret is installed to ensure the cutting accuracy.



## Standard Workpiece Test Cutting

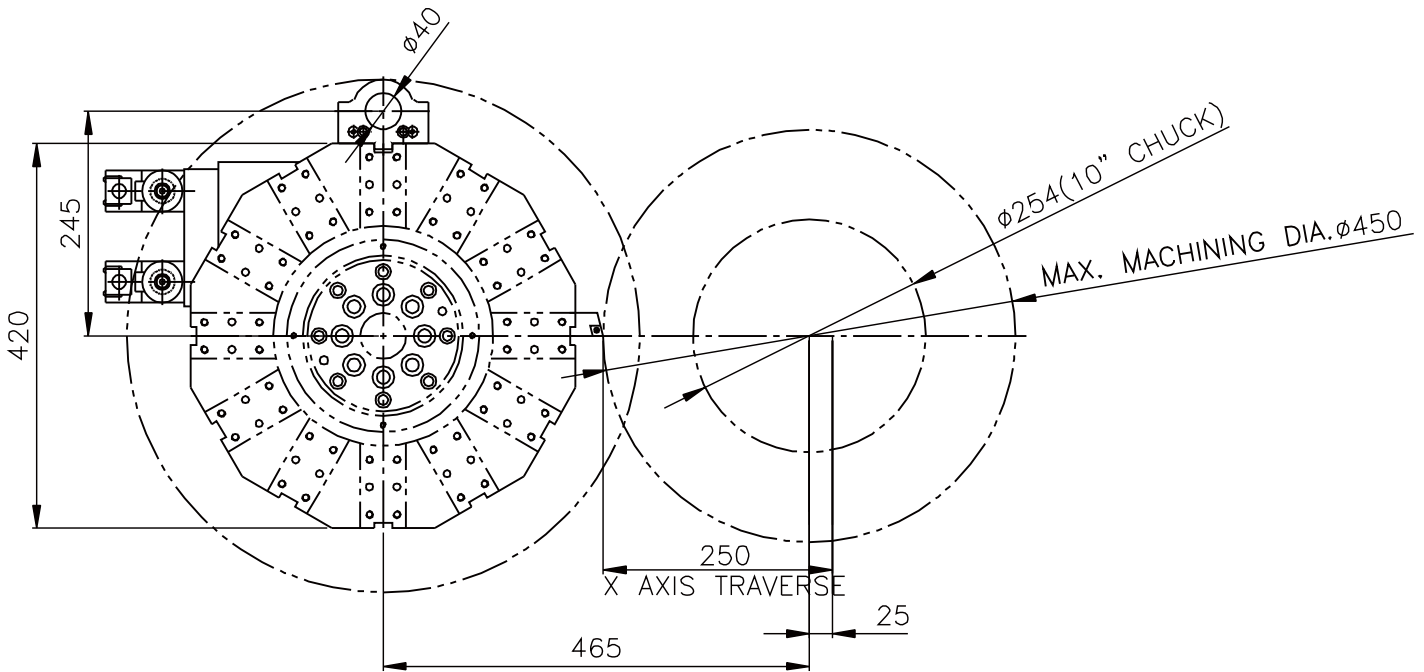
- The standard workpiece cutting-test is carrying to ensure the certain range of accuracy on marching and performing.



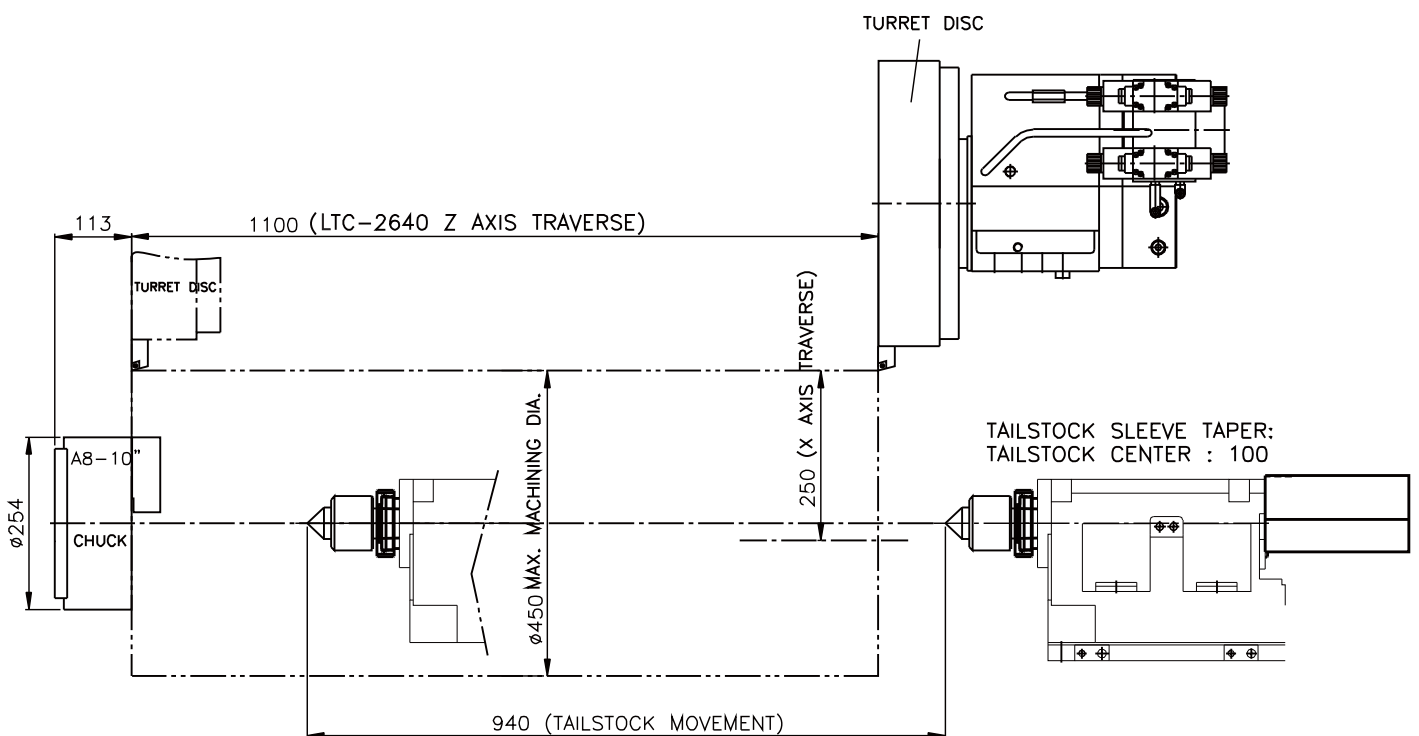
## Parts Catcher

- Workpiece is taken by parts catcher after machining. Productivity can be increased when connecting with barfeed units.

## Tool Interference



## Machining Range

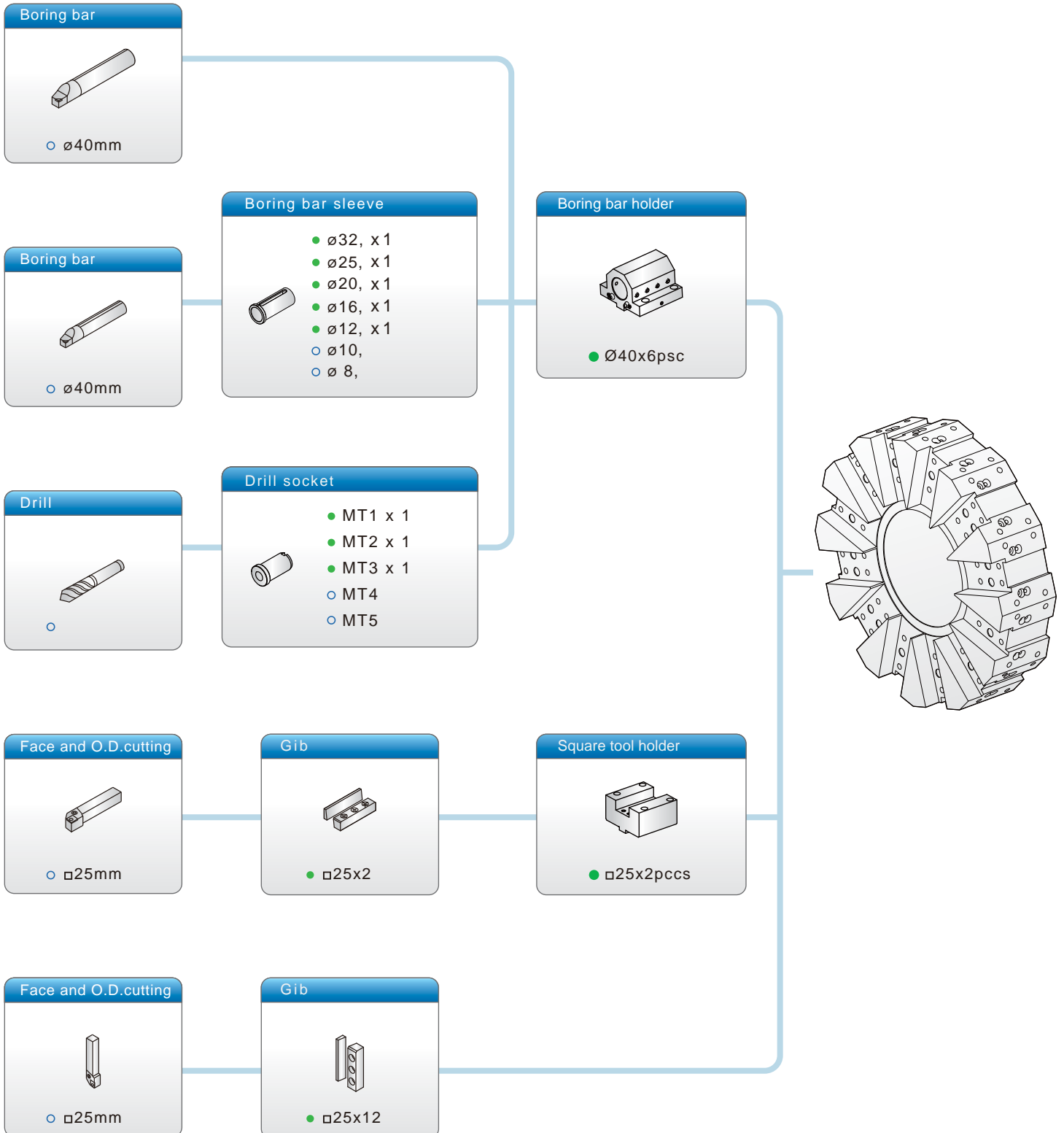


## Tooling Chart

● : Standard

○ : Optional

Unit : mm



## Specifications

MODEL		LTC-2630	LTC-2640	LTC-2660	
<b>Capacity</b>					
Max. swing over bed	mm	Ø680	Ø680	Ø680	
Swing over cross slide	mm	Ø460	Ø460	Ø460	
Max. turning diameter	mm	Ø450	Ø450	Ø450	
Max. turning length	mm	750	1050	1550	
Bar capacity	mm	Ø77	Ø77	Ø77	
Max. workpiece weight (with tailstock)	kg	500	500	500	
<b>Travel</b>					
X axis	mm	225+25	225+25	225+25	
Z axis	mm	800	1100	1600	
<b>Spindle</b>					
Spindle speed range	rpm	35-3500	35-3500	35-3500	
Chuck size	inch	10	10	10	
Spindle motor power	KW	PC Based	Fanuc 0i-TD	Siemens 802D	MITSUBISHI M-70
		15	18.5	20.5	15
Type of spindle nose		A2-8	A2-8	A2-8	
Spindle bore	mm	Ø90	Ø90	Ø90	
<b>Turret</b>					
Number of tool stations		12	12	12	
Shank height for square tool	mm	□25	□25	□25	
Shank diameter for boring bar	mm	40	40	40	
<b>Rapid feedrate</b>					
X axis rapid traverse	M/min	15	15	15	
Z axis rapid traverse	M/min	20	20	20	
<b>Hydraulic unit</b>					
Pump motor	KW	1.5	1.5	1.5	
Tank capacity	L	70	70	70	
<b>Miscellaneous</b>					
Power supply	KVA	40	40	40	
Machine Weight	KG	6500	6800	7100	
Machine dimensions (L×W×H)	mm	3600×1910×2150	3900×1910×2150	4400×1910×2150	

• All specifications, designs and characteristics shown in this catalogue are subject to change without prior notice.

# LARGE TYPE CNC PRECISION TURNING CENTER

ACCESSORIES	
Metric disc	●
Manual tailstock	●
Heat exchanger for electric cabinet	●
Full enclosure splash guard	●
3-jaw hollow power chuck	●
Foot switch	●
Wide angle V-Belt	●
Alarm lamp	●
Control system	■
Programmable tailstock	■
Inch disc	■
Transformer	■
Air conditioner for electric cabinet	■
Bar feeder	■
Auto door	■
Spindle air outer blast	■
High pressure coolant pump	■
Chain type chip conveyer	■
Chip bucket	■
Collet chuck	■
Oil mist collector	■
Oil skimmer	■
Tool setter	■
3-jaw solid power chuck	■
Robot	■
VDI disc	■
Manual steady rest	■
Hydraulic steady rest	■
H.T.D belt	■

● :S.T.D    ■ :OPTION

MACHTEK  
LTC-2640

# MACHTEK

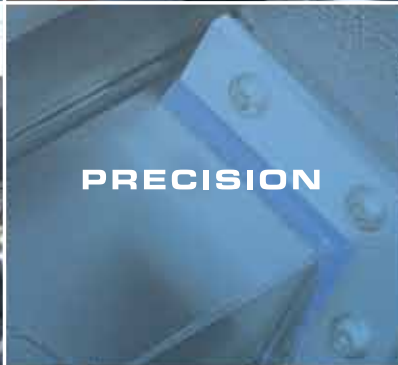
RIGIDITY



PERFORMANCE



PRECISION



ACCURACY



AUTOMATION



INNOVATION



 **MACHTEK**  
**CNC**  
AUTOMATION

## MACHTEK UNIX INC.

No.181-1,Dazun Rd., Shengang Village, Shengang Shiang,  
Taichung County 429, Taiwan

Tel:886-4-24525650 Fax:886-4-24525657

Tel:886-4-25611114 Fax:886-4-25614433

<http://www.machtek.com.tw> E-mail:sale@machtek.com.tw

DISTRIBUTOR



**Россия**

Trade Technology  
Ordzhonikidze ul. d.11, str. 11  
115419, Moscow (Russia)

Tel. +7 499 - 650 5031

Fax +7 499 - 650 5031

Web ► [www.trte.ru](http://www.trte.ru)